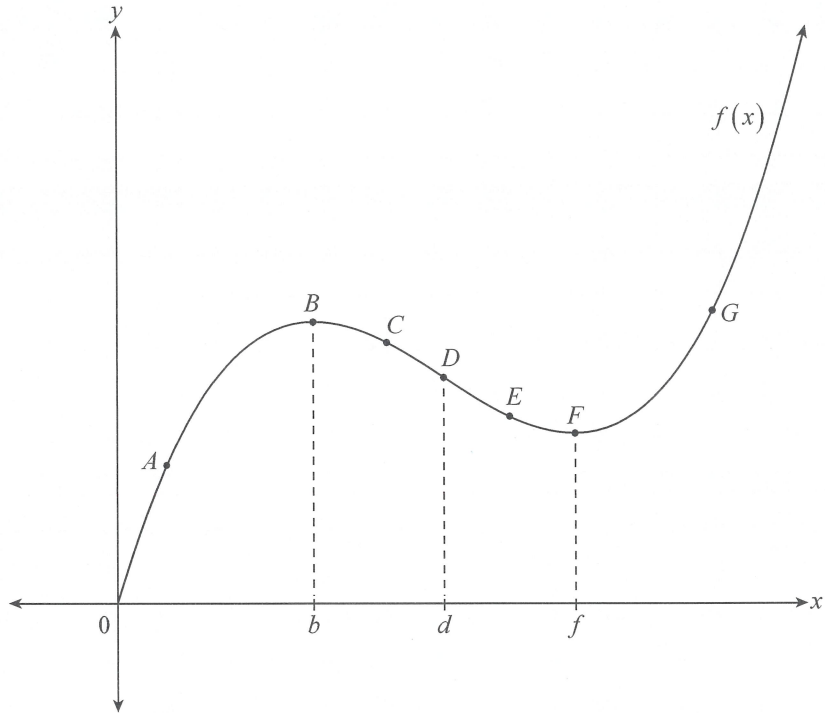


Question 6

Consider the function $f(x)$, defined for $x \geq 0$. The graph of $y = f(x)$ is shown below.

Point B is a local maximum with x -coordinate b , point D is an inflection point with x -coordinate d , and point F is a local minimum with x -coordinate f .

Points A , C , E and G are also shown on the curve.

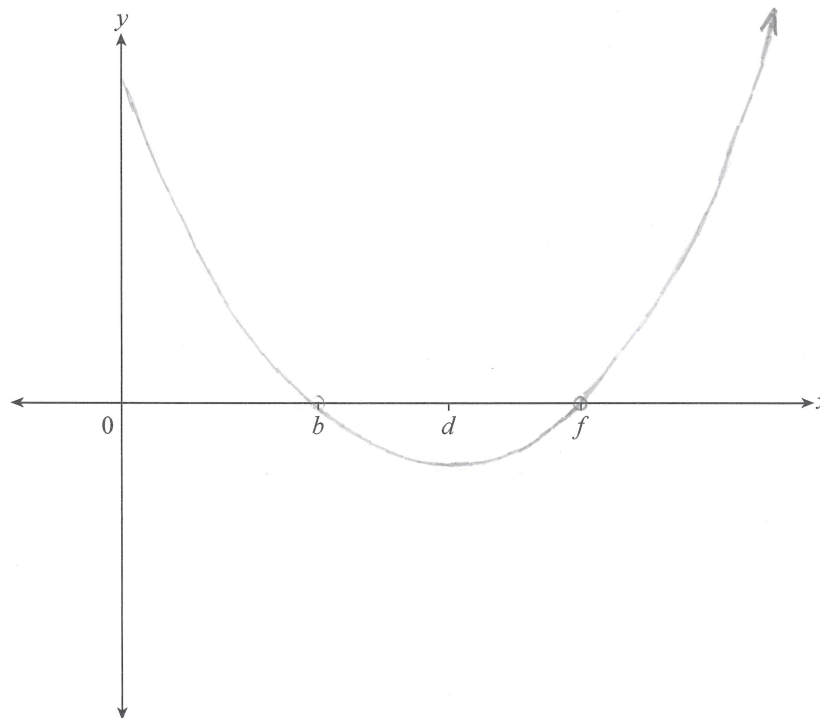


(a) For what value(s) of x is $f(x)$ decreasing?

(1 mark)

- Identify the point(s) with the following properties:

(c) On the axes below, sketch the graph of $f'(x)$.



PLEASE TURN OVER