

Descriptive AND Evaluative language

Year 9 English: Major Assessment 2 – Due 11 April – 900 words min

Learning Intention: Students can identify how language techniques contribute to meaningful and evocative descriptions and use these techniques to produce creative descriptive texts. They understand that evaluation can be expressed directly and indirectly using devices such as figurative language & word connotations. Students can analyse and evaluate how language features are used to represent a perspective of an issue, event, situation, individual, or group.

Your task is to write 2 descriptions and 2 evaluations.

1. A description of a setting (place) – 300 words

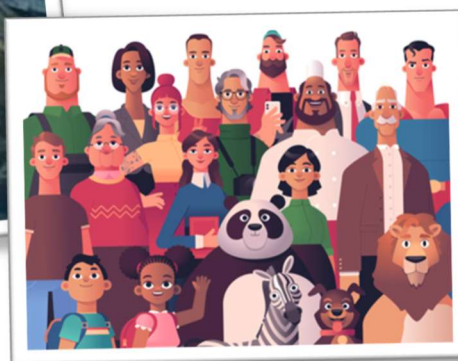
You can create a fictional setting or describe a place that you know. Make sure you use the techniques and features we went through in class: concrete and abstract language, figurative language, sensory language, strong descriptive verbs, adjectives & adverbs.

2. A description of a character – 300 words

This must be a fictional, made-up character and should not resemble any existing person. Use the description techniques we went through, as above. **IMPORTANT:** make sure you include a description of the character's personality, quirks, habits, etc, as well as their physical appearance.

3. Evaluations – choose TWO of the sets of texts to compare & evaluate – 300 words

- Each set contains a series of questions about each text – answer these first.
- The final three evaluative questions are the most important. Your answers should include judgment (which one is better) and comparison (what makes it better). In the final question, use persuasive language to try and convince the reader to agree with you about which one is best. Imagine you're an advertising agency trying to sell this text to me – use high modality (definitely, absolutely), powerful emotive words, and figurative language.



Marking Rubric

Performance Standards:	A	B	C	D
<p>Setting description:</p> <p>Description of the setting creates tone and mood, forms a picture in the mind of the scene.</p> <ul style="list-style-type: none"> • Uses concrete & abstract language • Uses figurative language • Uses sensory language • Uses strong descriptive verbs • Uses interesting adjectives & adverbs 				
<p>Character description:</p> <p>Description of character gives an effective picture of the character's appearance and personality</p> <ul style="list-style-type: none"> • Uses concrete & abstract language • Uses figurative language • Uses sensory language • Uses strong descriptive verbs • Uses interesting adjectives & adverbs • Does not resemble any existing individuals 				
<p>Evaluation 1:</p> <ul style="list-style-type: none"> • Answers questions correctly and thoughtfully • Includes judgment and comparison, using comparative & superlative adjectives • Uses persuasive language - modality, connotations, figurative language 				
<p>Evaluation 2:</p> <ul style="list-style-type: none"> • Answers questions correctly and thoughtfully • Includes judgment and comparison, using comparative & superlative adjectives • Uses persuasive language - modality, connotations, figurative language 				
<p>Accuracy:</p> <ul style="list-style-type: none"> • Writing is clear and fluent, connects ideas logically. • Assignment is proof-read and contains few or no spelling errors or mistakes in grammar and punctuation. 				