



Signature Cafe Menu

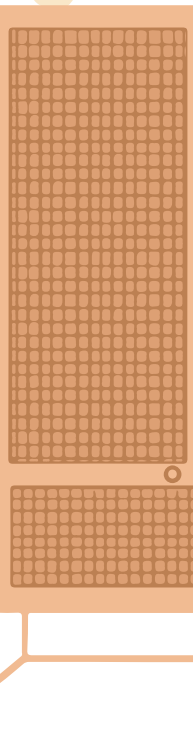
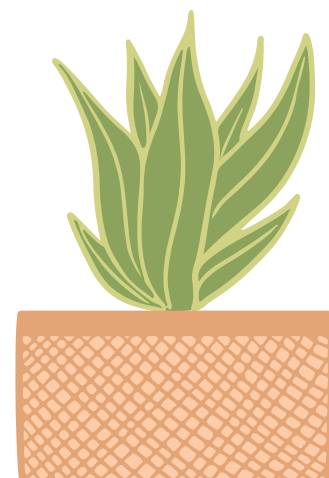
Practical Exploration (40% of total
assessment)



Personal and Social Capability

You will be focusing on developing your personal and social capability throughout this assessment.

- developing a sense of personal identity and self-awareness
- reflecting on their own learning and personal development
- developing social interactions with others, including community
- participating in political, economic, and legal aspects of community life
- developing empathy for and understanding of different points of view
- valuing and respecting a range of perspectives
- developing the skills to be able to work together effectively with others
- learning, living, and working in local, national, and global environments
- expressing feelings, ideas, and opinions.

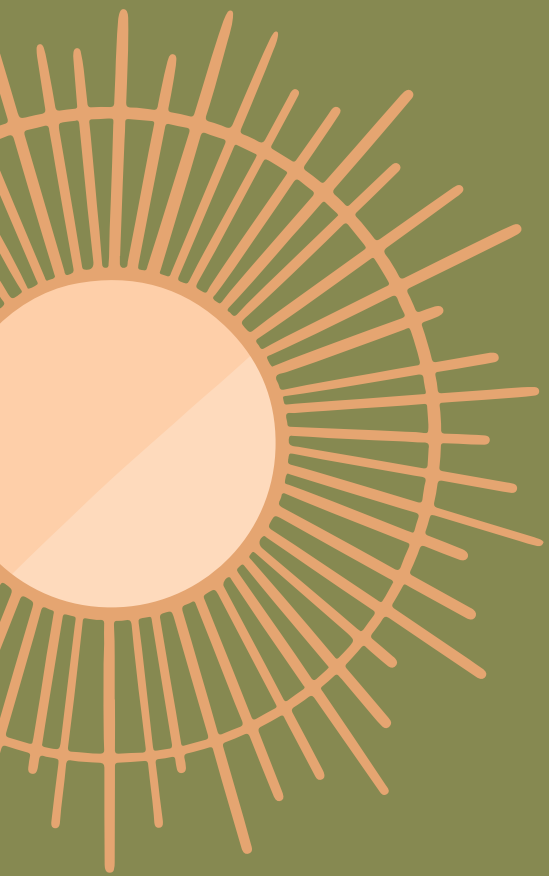


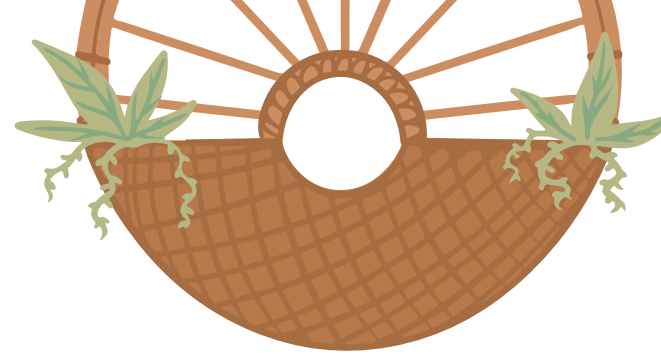
Purpose

Students work together to develop practical skills to produce their signature menu items, suitable for a café menu. Whilst developing their personal and social capabilities.

In pairs students will create a signature menu, which must consist of a savoury item, sweet item and two beverages. They will prepare and present these to demonstrate their practical skills.

Students will then individually present an evaluation where they will highlight on the outcome of this practical and the skills they developed, discuss feedback and summarise their development of the capability.





Planning

Working in pairs plan your signature menu. This must include a savoury and sweet food item, as well as two beverages.

Your planning should include:

- Recipes chosen, attached to an accurate food order form
- Detailed plan of the practical including job allocations

When deciding on menu options pairs should consider their development of the Personal and Social Capability (skill development, creativity, leadership skills, time management, communication and group work ability)

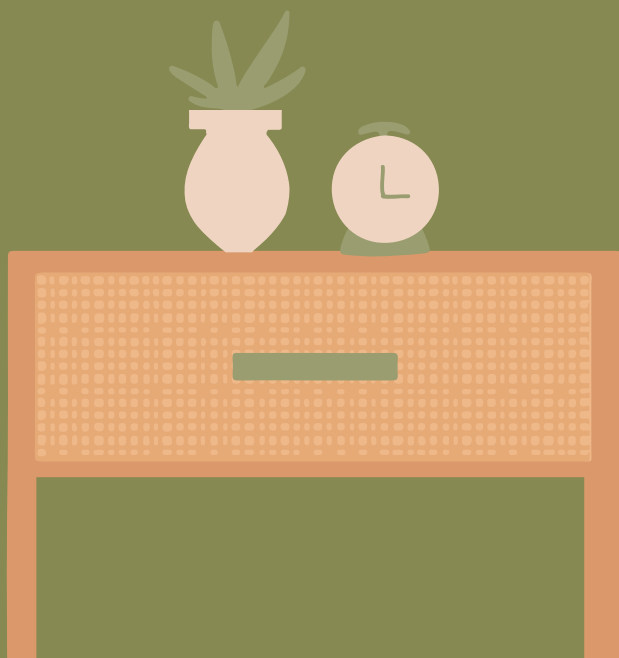
Working in pairs, prepare and present a signature menu, suitable for a Café. This must include a savoury and sweet food item, as well as two beverages.

Practical

90mins

This will need to be completed, and presented within 90mins.

Photographic evidence of the practical must be collected, along with annotations: including a short discussion of the processes which are being completed.



Evaluation

Individually present an evaluation of the practical outcome (**max 750 words (or 5 min multimodal presentation)**)

This will need to include:

- Highlights of the practical process and skills which were used, and developed.
- Photos of the practical to illustrate and support points made.
- The discussion of self and peer reflections of the final outcome.
- The discussion of the development of the personal and social capabilities.

Performance Standards

Thoughtful and consistent application of a range of knowledge, concepts, and skills for a purpose.

- a good understanding of the practical by drawing on different areas of your learning.
- using the required skills throughout your practical correctly and consistently.
- adapt your use of knowledge, concepts, and skills to fit the requirements of the task.

Effective development and insightful application of a chosen capability/or chosen capabilities.

- show evidence of improvement and growth in the chosen capability
- clearly identify and focus on a specific capability throughout the whole task.
- Go beyond simply using the capability and demonstrate a deep understanding by applying it in a thoughtful and innovative way.

In-depth reflection of the student's own learning through self-assessment and feedback from others.

- identify areas where you excel and areas where you can improve.
- considers and understands the feedback you receive.
- Evaluation the skills that you develop and how they this effected your final product.

Sustained and productive collaboration with others.

- consistently contribute to discussions, shares ideas, and complete assigned tasks within the group.
- express your ideas clearly, listen actively to others, and finds solutions through respectful communication.
- recognizes and utilise the unique skills and perspectives of everyone in the group.